

Exporting After Effects to Flash

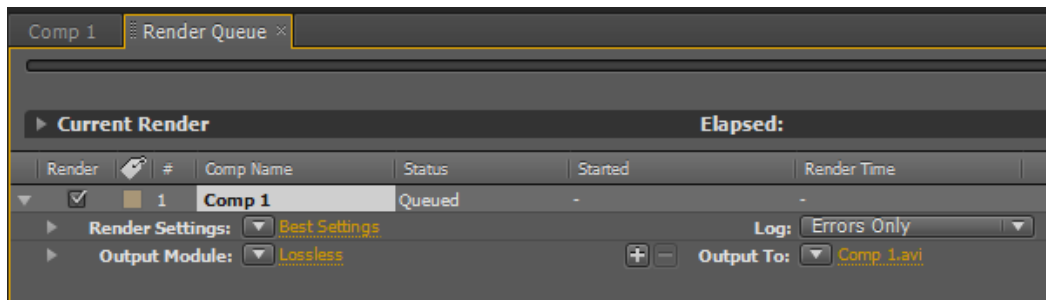
Flash supports 2 video formats:

- H.264
- F4V

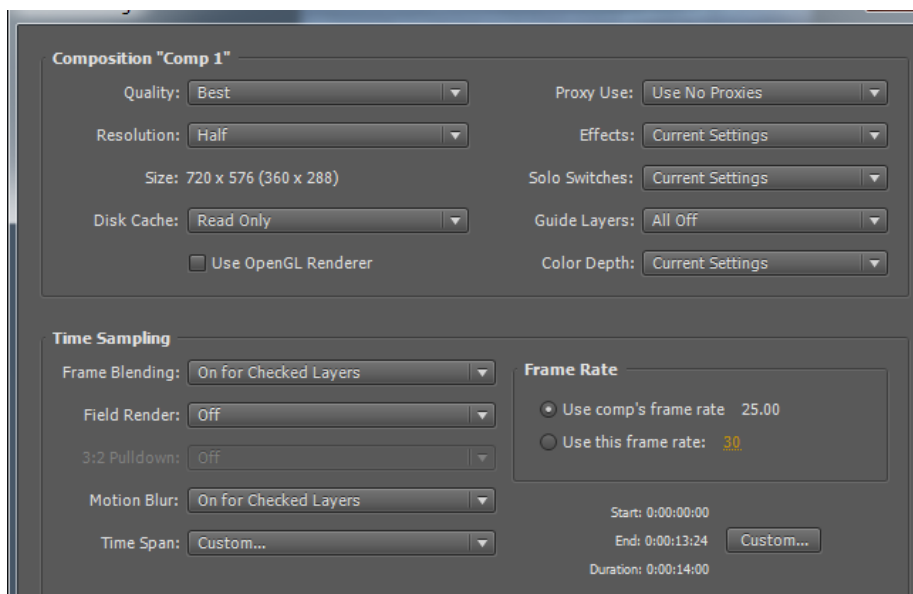
F4V needs flash player 9 or newer - H.264 used in variety of devices e.g. iphone

After Effects

1. Create a new after effects composition PAL duration 30 seconds.
2. From the w drive import 2 surfing clips and edit them so they are on the timeline.
3. Use the text tool and create a title saying Surfing Australia, make this 5 seconds long in duration and applying an animation in effect.
4. Now we want to render the video, this needs to be added to the render queue select composition from the top menu / add to render queue. You will see the following image:



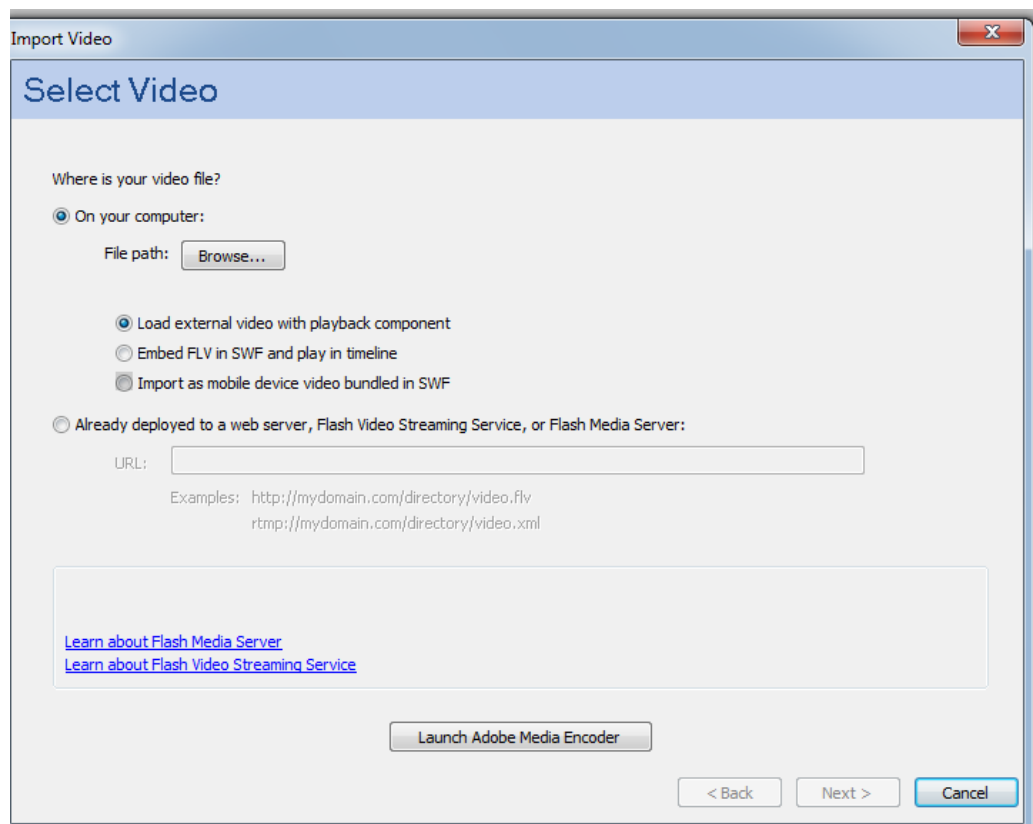
5. Click on the triangle to bring up the options for render settings. By default it will be set to best settings we want to change this so it is suitable for use within Flash. Change the resolution to half (360x288), change the time span to length of composition and leave all the other settings the same.



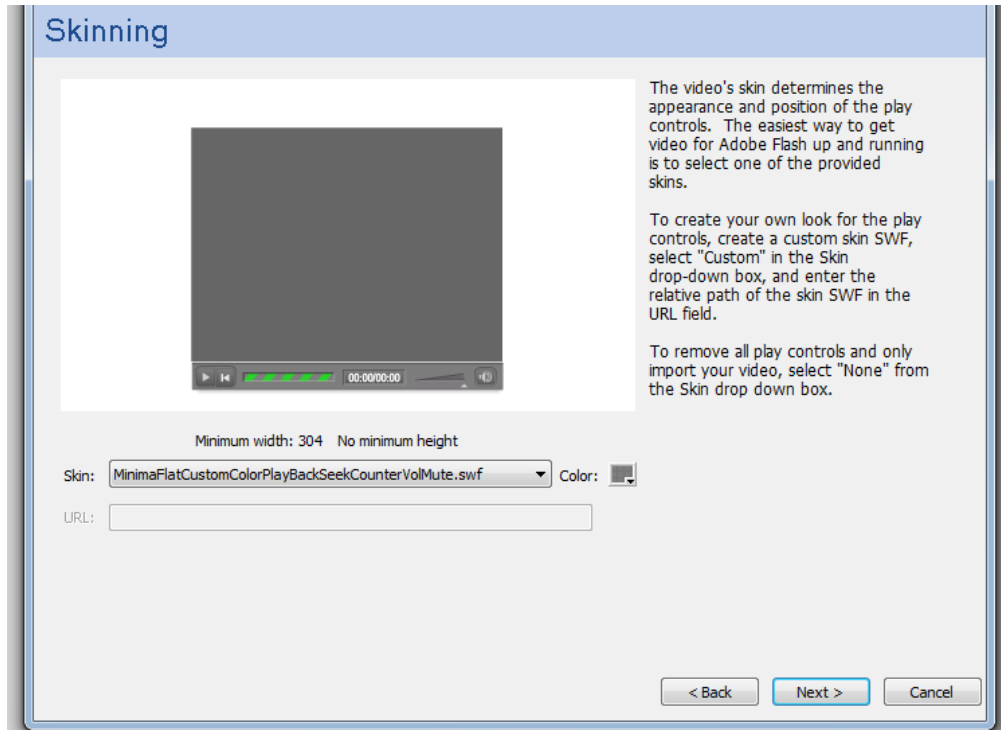
6. Select the output mode, this is the place where you can select the appropriate codec. Select the F4V(H.264) option this will bring up another panel with various options.
7. From the preset options change same as source.
8. The bitrate settings affects the quality of the video. Having a low setting will result in playback being quicker . If after you export the video and you are unhappy with the quality then you could always increase the bitrates and export again.
9. Click on the audio tab and have a look at some of the settings. Again if you adjust the bitrate this will improve quality but increase file size.
10. Press ok once you are happy with the settings.
11. The output to options just enables you to specify the folder you want to export the file to. Change this to something sensible like a usb pen or hard drive.
12. Once all your settings are correct press the render button located on the right hand side of the panel. It may take a few minutes to render.

Flash CS5




13. Now open flash.
14. Create a new flash document, then select file / import / import video the following box will appear:



15. The first option is the one we will use, you will use a component and the video will be stored on the server / local area for playback. The next option would embed the video on the timeline thus creating a very large file and the last option uses flash lite for mobile playback.
16. Select the path of your video by selecting the browse button.
17. Press next and the following screen will appear



18. This allows you to change the options available within the playback component and colour etc.. Press next and then finish.
19. Control and test your movie.
20. **NOTE VERY IMPORTANT!!!!** If you look at the details in the component inspector you will see that the path of the video is C:// etc... if you put this on disc then it **will not work**. You are best having the fla / swf in the same folder as the video and just having the video name at the source.

Property	Value
align	center
autoPlay	<input checked="" type="checkbox"/>
cuePoints	None
motion Presets	<input type="checkbox"/>
preview	None
scaleMode	maintainAsp...
skin	MinimaFlatCus... 
skinAutoHide	<input type="checkbox"/>
skinBackgroundAlpha	1
skinBackgroundColor	
source	C:\Users\grsi... 
volume	1

You will need to ensure that this works for your assignment or you will have marks deducted!!!